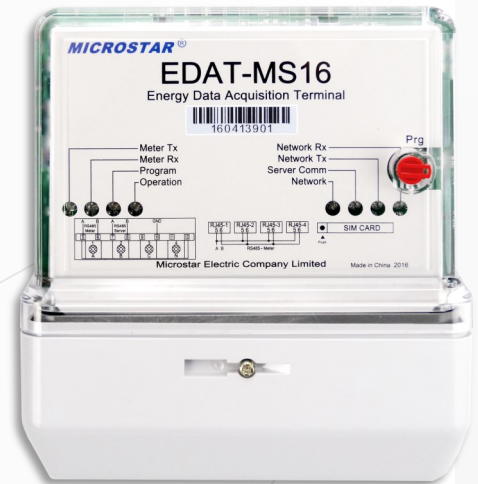


MICROSTAR EDAT-MS16

Energy Data Acquisition Terminals Cost Effective AMR Integration Endpoint



FEATURES

- Collects and aggregates data from up-to 127 meters
- Integrates industrial and residential meters into AMR/AMI network
- GPRS, PSTN, Wi-Fi, or Ethernet for up-link communication
- RS485, RF, PLC, Wi-Fi, or Ethernet for local communications
- Scheduled or on-demand data acquisition with configurable channels
- Upload data to AMI server system (TMR-2012) automatically
- Supports DLMS, IEC62056-21, IEC870-5-102 or MODBUS protocol
- Compatible with third-party meters with open protocol
- Short message service (SMS) configuration in real-time

TECHNICAL SPECIFICATIONS

External Dimensions	180mm x 163mm x 64mm
Operation Voltage	85 - 265 VAC, 50/60 Hz
Power Supply	Three Phase or Single Phase
Power Consumption	≤ 5W
Operation Temperature	-25 °C ~ +70 °C
Memory Storage	4 MBytes to 16 MBytes
Meter Capacity	Up-to 127 meters, 1-phase or 3-phase
Input & Output	2 channel input for tampering detection, 1 channel output for control signals
Communication Channel to AMR server to meters	GPRS/GSM, PSTN, Wi-Fi, or 10/100 M Ethernet RS485, RF, PLC, Wi-Fi, or Ethernet

APPLICATION

- Provide AMR solutions for residential or commercial meters in batch
- Integrate existing non-smart meters to AMI systems
- Support third-party meters from different vendors

BENEFITS

- Reduce communication cost for multiple adjacent meters
- Convert different protocols into one to reduce system complexity
- Large storage capacity to avoid data loss due to power outage
- Compact design with superior strength and easy to install
- Sealing provision and anti-tamper input signals for device security
- 4xRJ-45 sockets for multiple plug-and-play meter connections

SAMPLE APPLICATION

